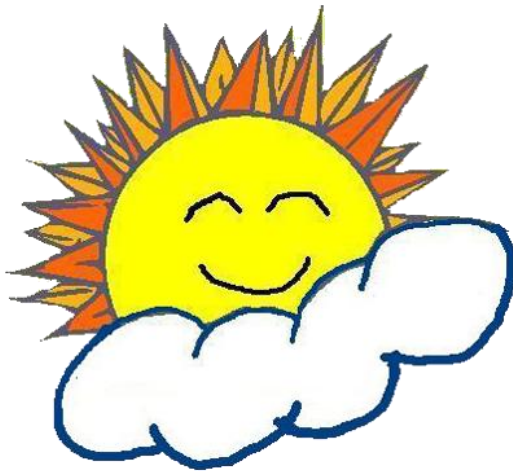


# *Sonshine Enrichment Center*

3040 Ridge Road  
Highland, IN 46322

*An integral part of Highland Christian School*



"Train up a child in the way he should go and when he is old, he will not depart from it." Proverbs 22:6

Thank you for your inquiry regarding Sonshine Enrichment Center. The information on the following pages will answer many of the questions you may have. If you have additional questions, please feel free to call our school office at 838-0356 anytime Monday-Friday 8:00 a.m. - 3:30 p.m. If you would like a tour of the school, please stop by anytime during school hours.

You may also contact Jodi Lineburg at the phone number above or at [jlineburg@highlandchristian.org](mailto:jlineburg@highlandchristian.org) .

### **Sonshine Enrichment Center**

Sonshine Enrichment Center exists to provide a secure, loving Christian environment where children develop spiritually, socially, emotionally, intellectually, physically, and creatively. At SEC, we believe that each child is a special and unique creation of God. We encourage each child to recognize his or her value in God and the world He created.

We believe that the best educational atmosphere for children in early childhood provides opportunities within a Christian environment to create, problem-solve, have hands-on exploration, and have social interactions with adults and other children.

### **History of Highland Christian School**

Highland Christian School was organized over 100 years ago by a group of Christian Reformed parents who were committed to providing their children with a Christian education. Continual growth created consistent building and faculty changes. After several years, land was purchased on Ridge Road and the first section of our present structure was erected. Today, our structure consists of **Sonshine Enrichment Center**, gymnasium, band and music room, art room, regular classrooms, offices, a new computerized library, computer lab, soccerfield, and playgrounds.

## About Sonshine Enrichment Center

**Two-Day Program:** Students for the two-day class must be at least 3 years old before September 1. The two day program meets on Tuesdays and Thursdays. The morning class meets from 8:45am to 11:15am. The afternoon class meets from 12:30pm to 3:00pm. Students must be toilet trained.

**Three-Day Program:** Students for the three-day class must be at least 4 years old before September 1. The three-day session meets on Mondays, Wednesdays, and Fridays. The morning class meets from 8:45am to 11:15am. The afternoon class meets from 12:30pm to 3:00pm. Students must be toilet trained.

**Five-Day Program (Half and Full Day):** Students for the five-day class must be 3 or 4 years old before September 1. The five day program meets Monday through Friday. The class begins at 8:30 a.m. and ends at 3:15 p.m. **Half-day students** are released at 11:45 p.m. Students must be toilet trained.

### **Drop off**

Teachers and aides greet and retrieve each child from the vehicle. This allows for smooth and consistent daily transition for both parent and child. When students enter the building, they are welcomed onto a rug to sing and dance, exercising small and large muscles, while adapting to the day socially.

### **Pick up**

Pick up time is organized to transition smoothly. Each child is accompanied to the vehicle to provide for maximum safety. The staff and parent are able to communicate important details at this time, and this time allows for smooth transition to each child into the next part of their day.

### **Child Teacher Ratio**

The child to teacher ratio is from 7-10 to one. There is a lead teacher in each classroom and aide(s) to maintain the ratio.

## **Tuition and Other Fees**

### **Sonshine Enrichment Center Tuition:**

- \$135.00 per month for three-day Pre-school
- \$105.00 per month for two-day Pre-school
- \$236.00 per month for five-half day Pre-school
- \$390.00 per month for five-full day Pre-school
- \$40.00 Registration Fee

### **Bus Fee (if needed):**

- \$385.00/year per child for a.m. and p.m. bus service.
- \$192.50/year per child for one way bus service.

**Milk (if desired):** \$16.00 per child

### **Before and After Care Fee:**

\$5.50 per child per hour. Services are pre-scheduled or on a drop-in basis. For preschool students, Before and After Care is available prior to 8:45 a.m. and after 2:45 p.m.

## **Hot Lunch**

Hot lunch is available on Wednesdays to 5 Full Day students. The students take sack lunches to school on the other days. A student desiring to take hot lunch can bring their money (\$1.50 per lunch) each week; or they can purchase a hot lunch card from the office. Our hot lunch cards are \$18.00 for 12 lunches.

## **Information for future financial planning:**

### **Highland Christian School Tuition:**

- \$5,135.00 cost of education per full-time student
- \$4,110.00 per five full-day kindergarten student
- \$3,090.00 per three full-day kindergarten student
- \$2,570.00 per half-day kindergarten student

## **SONSHINE ENRICHMENT CULTURE**

### **Sonshine Goals**

The goals of SEC are met through a discovery approach to learning. The program is both flexible and structured, meaning that the curriculum is carefully planned around developmentally appropriate experiences, yet flexible enough to meet the individual needs of each child. God's creation, love and value is the base of what we learn every day. Each week we have a color, number, shape, and letter to learn about and each month we have a Bible verse and prayer to focus on.

### **Parental Partnership and Involvement**

A strong parent/school partnership is a critical component in your child's preschool experience. Parents are invited to provide feedback and to communicate actively. School personnel are duty bound to provide all student-related information, work selflessly, and communicate with empathy and strategy in the best interest of each student. We trust God to guide us as we look together at the preschool needs of each Sonshine student.

### **Relational Implications**

We believe that relationships are a critical factor in learning. Within the context of school relationships various kinds of content and skill are delivered. In essence, these relationships form a basis for a **living** curriculum.

### **Personnel Implications**

Every member of the community, whether staff, faculty or administration, must be able to function from the heart to disciple and shepherd children in God-centeredness, through a life that is surrendered to Jesus Christ. In addition, teachers at Sonshine must be certified, knowledgeable and skilled to teach preschool children.



## **SONSHINE ENRICHMENT CURRICULUM**

Daily structure and curriculum of the day includes:

### **Welcome Circle**

- Concepts of the day and week are discussed on child's classroom rug.
- Discussion includes, but is not limited to, the letter of the week, number of the week, color of the week, calendar, weather, and activities planned for the day.

### **Choice Time**

- Choice time is about an hour period that allows the children to move from curriculum based stations throughout the room, monitored and taught by the teachers and aides.
- The stations include block area, manipulative and imaginary play area, library, science/sensory activity area, and art area.
- At this period in the day, self-directed options and play is encouraged.
- Some of the program goals can be established and practiced at this time of day through sharing, helping, acceptance of others, creative expression, verbal expression, writing, drawing, painting, building, ownership of work, scissor practice, helping with tasks, following directions, group activities, stories, manipulative toys, and games which help establish
  - ✓ self-esteem
  - ✓ self-concept
  - ✓ appreciation of God's world
  - ✓ self expression, uniqueness and creativity
  - ✓ sensitivity to others
  - ✓ Christian love

## **Circle Time**

- Circle time is a time of day that we discuss and sing our monthly Bible verse, sing songs geared towards the week's curriculum goals using fine and large motor skills, share children's individual stories and ideas, dance, storybook time, and circle group discussion and activities.
- These activities are performed on the classroom rug with teacher instruction and depending on the classroom count, at least one teacher aide.

## **Bible Story Time**

- Bible stories, sharing, helping, listening, acceptance of others, music and verbal expression, books, following directions and group activities where children can gain experience in
  - ✓ self-esteem
  - ✓ creativity
  - ✓ uniqueness
  - ✓ self-concept
  - ✓ sense of wonder
  - ✓ social responsibility
  - ✓ small and large muscle development
  - ✓ awareness of God's world
  - ✓ Christian love

## **Small Group Time**

- This is a directed time when students break to tables with the teachers and aides to work on activity based curriculum that is carefully planned and developmentally appropriate.
- Through writing, drawing, counting, coloring, colors, patterns, shapes, numbers, creative expression and the alphabet: children advance and mature in the week's academic concepts. Children again can gain experience and advance in their
  - ✓ self-esteem
  - ✓ creativity and uniqueness
  - ✓ sense of wonder and appreciation of God's world
  - ✓ self-concept
  - ✓ listening skills
  - ✓ ability to follow directions

## Snack Time

- All snacks are carefully planned. Consideration is always given to allergies and food sensitivities. Snack is always given with a drink, and the goal of the snack is not only to be healthy and fun, but also geared towards the week's curriculum based on shape, color of the snack, or what the snack starts with to correlate with the letter of the week.
- Before snack everyday, we pray. We acknowledge the blessings the Lord has provided to us, and remain thankful for His love.
- We find that even during snack time, teaching opportunities are provided. The goals of the program including following directions, independence, and appreciation of God's world can be established here.

## Recess

- Recess is also planned carefully around the week's curriculum.
- If weather does not allow us to go outside due to extreme hot/cold temperatures or rain, we provide indoor activities that allow the children to develop their fine and large motor skills through indoor play.
- Students have a choice to participate in various activities provided by the teachers and aides through the playground equipment and outside toys and games. At recess, children reach the following goals of the program including, but are not limited to:
  - ✓ fine and large muscle development
  - ✓ creativity and uniqueness
  - ✓ social responsibility
  - ✓ sense of wonder and appreciation of God's world
  - ✓ self-esteem
  - ✓ self-concept

## **Items Needed Before School Starts**

There is an enrollment form and child information form to be filled out included in the Sonshine Enrichment Center brochure. Inside the brochure, you will also find an immunization form in accordance with the Indiana State Department of Health to be completed by yourself and your child's physician.

It is a blessing to have the opportunity to serve our Lord by teaching preschool aged children about the world that He created. It is a privilege to partner with parents in the early education of these precious children. Each day and each child is a unique gift, that is what we want all of our students to be able to see and experience.



## **About Highland Christian School Programs (K-8)**

Highland Christian School is a pre-kindergarten through eighth grade institution. We also have a preschool program called "Sonshine Enrichment Center" that serves students 3 - 5 year olds.

The kindergarten program offers three attendance options: half-day five days a week, full-day three days per week, and full-day five days per week. The half-day kindergarten class begins at 8:30 a.m. and dismisses at 11:45 a.m. and the full-day kindergarten classes meet from 8:30 a.m. to 3:15 p.m. The three full-day kindergarten class meets every Tuesday, Wednesday, and Thursday.

The cut-off birth date for kindergarten is September 1 of the year that your child is starting school. All children entering Highland Christian School are tested before they begin school.

The school day begins at 8:30 a.m. and dismisses at 3:15 p.m. There are two class sections per grade. Class sizes range from approximately 16 to 24 students per class. Aides may be added based upon best educational practice and these decisions are based on the consideration of many factors.

Before and After Care is provided inside our school building. Services are provided on a pre-scheduled or drop-in basis. Morning services are available beginning at 6:30 a.m. After school services are provided until 6:00 p.m.

Bus service is available for students in kindergarten through eighth grade. Bus service for half-day kindergarteners is a one-way service – a.m. pick up only. Students in full-day kindergarten and first through eighth grade have the option of morning and/or afternoon transportation.